

## PAINTING INSTRUCTIONS

Before you begin, we recommend that you: Unwrap the sculpture and check it over – we suggest a light sand prior to painting, but do ensure that any dust or debris is wiped away, a simple wipe over with sugar soap, will remove any dust or hand grime, that may stop paint adhering properly.

Some small blemishes may be visible in the primer and some small chips may have occurred in transportation. Larger chips may need to be filled with a plastic filler e.g. Isopon easy sand.

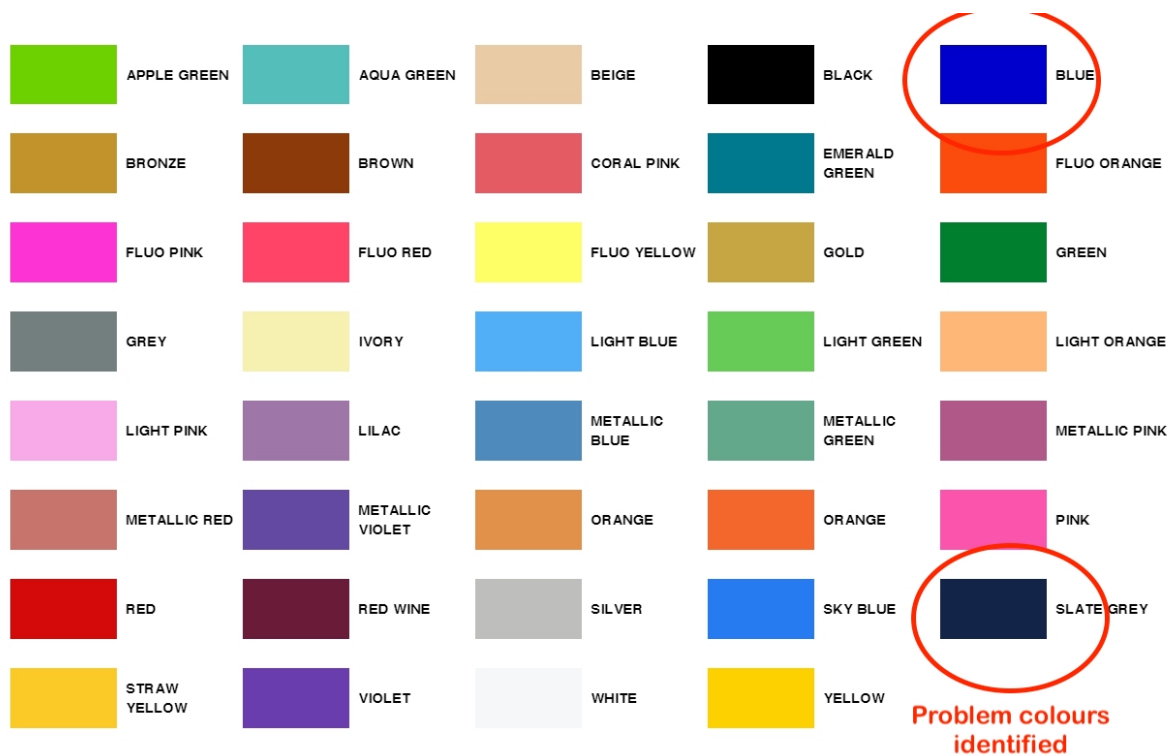
If you require a particularly high gloss finish to your piece, then even more consideration should be given to sanding the primer to a smooth finish using several grades of sandpaper. Please wear a dust mask whilst sanding.

### Decorating the sculpture

To paint a sculpture, we recommend you use:


- A good quality artists' acrylic water-based paint
- Emulsion paint for larger areas
- Acrylic metallic paint
- Spray paints
- Acrylic pens such as Poscas and Edding Acrylics (FYI. We suggest avoiding using the 'blue' and 'slate grey' posca pens as we've had reports of bleeding with these particular colours. You can minimise the risk of this happening (albeit a rare occurrence) by applying a fixing spray 24 hour before varnish is applied to form a barrier.






**Water Based Spray Varnish** - ideally a Matt or Satin finish to provide a key for the easy-on varnish coating.

- Windsor & Newton Professional Matt Spray Varnish
- Liquitex Professional Satin Spray Varnish
- or a similar **water-based** Matt/Satin Varnish ('always test any new products')

	<p><b>Ghiant Varnish20 (Matt)</b>  <a href="https://www.amazon.co.uk/Ghiant-Water-Based-Varnish-Matt-Transparent/dp/B007HMHG6U">https://www.amazon.co.uk/Ghiant-Water-Based-Varnish-Matt-Transparent/dp/B007HMHG6U</a></p>
	<p><b>Windsor &amp; Newton Professional Matt Spray Varnish</b>  <a href="https://www.cowlingandwilcox.com/mediums-varnishes/164-winsor-newton-general-purpose-varnish-400ml-matt?utm_campaign=google_shopping_cw&amp;utm_source=google&amp;utm_medium=cpc&amp;gclid=EA1aIQobChMIu7iR9YW04gIV6LztCh3yiQJTEAkYASABEgKDFvD_BwE">https://www.cowlingandwilcox.com/mediums-varnishes/164-winsor-newton-general-purpose-varnish-400ml-matt?utm_campaign=google_shopping_cw&amp;utm_source=google&amp;utm_medium=cpc&amp;gclid=EA1aIQobChMIu7iR9YW04gIV6LztCh3yiQJTEAkYASABEgKDFvD_BwE</a></p>

	<p><b>Liquitex Professional Satin Spray Varnish</b>  <a href="https://artdiscount.co.uk/products/liquitex-400ml-spray-varnish-1?gclid=EAlaIQobChMI_vmnxYa04gIVSyrTCh3rkgIIEAkYASABEgJ0dPD_BwE&amp;utm_campaign=gs-2018-10-30&amp;utm_medium=smart_campaign&amp;utm_source=google&amp;variant=1550643527689">https://artdiscount.co.uk/products/liquitex-400ml-spray-varnish-1?gclid=EAlaIQobChMI_vmnxYa04gIVSyrTCh3rkgIIEAkYASABEgJ0dPD_BwE&amp;utm_campaign=gs-2018-10-30&amp;utm_medium=smart_campaign&amp;utm_source=google&amp;variant=1550643527689</a></p>
---	--

### Other Materials:

Please note: DO NOT APPLY solvent based permanent markers or other pens such as biro, ink fine nibs, Sharpies or felt pens etc as the colour runs and bleeds when varnish is applied. Please also avoid watercolour, oil, poster and gouache paints.

### General Painting DO's and DON'Ts



#### DO

- Do unwrap your sculpture upon delivery, check it over and report any damage immediately.
- Do go over your sculpture with a fine grade sandpaper, followed by a wipe over with a solution
- of warm water and a small amount of mild detergent (washing up liquid or sugar soap). The sanding gives a key to the surface prior to painting. N.B. Please wear a dust mask whilst sanding.
- Do use water-based acrylics or emulsion paints. Brands include Liquitex, System 3 or Valspar.
- Do use Posca or other acrylic pens for applying detail . These are water-based acrylic paint markers. (avoid those mentioned above)
- Do immediately wash any brushes and painting pallets you have used (before paint is dry) if you want to be able to use them again.
- Do make sure any materials are non-hazardous.
- Do varnish your sculpture. Once your sculpture has been signed off by the Wild in Art Arts Coordinator you will need to apply 2 coats of the supplied varnish. This will be 2-part Urban Hygiene – Easy On <https://www.urbanhygiene.com/product/easy-on-anti-graffiti-coating-clearglaze/> (unless otherwise advised)
- Do test the varnish on a small, discreet area of your sculpture first before applying it all over.
- Do make sure paint is completely dry before applying varnish with a light coloured bristle brush or roller.
- Do allow 12 hours for a coat of varnish to dry. Wait 48 hours after your final coat of varnish before handling the sculpture.

- Do varnish your sculpture in a dry environment – humid conditions can affect its application.
- Do mix Urban Hygiene's easy-on Protective Coating varnish products according to their instructions to ensure the correct consistency.
- Do contact Urban Hygiene for advice if you are using their varnish products. The team are extremely friendly and helpful.



## **DON'T**

- Don't use poster paints on your sculpture.
- Don't apply water colour, gouache or oil paints to your sculpture.
- Don't mix layers of paints with different bases as these will react either against each other, or with the final coat of varnish.
- Don't use felt-tip pens, permanent pens or any other solvent-based markers such as Sharpies, ink or marker pens.
- Don't hesitate to either test or ask us before using anything other than water-based acrylic, good quality spray or emulsion paint.
- Don't add 3D elements without express permission
- Don't mix more varnish than you need. Once the two parts have been combined ready for application, the solution becomes unusable after 24hrs.

## **Varnish**

Wild in Art recommends Urban Hygiene's – Easy On. This is a 2-part, outdoor, anti-graffiti protection, this is an epoxy based product, manufactured by Urban Hygiene. Once mixed the product has a shelf life of 12-24 hours. It must be mixed to the correct ratio. See enclosed instructions.

## **Step by step varnish instructions**

- The 2 parts need to be mixed at the ratio of 5 parts resin to 1 part cure - there is the correct ratio in the two parts provided. (If you need to run any tests prior to full application – you can mix a small amount, at the above ratio)
- Open both containers and pour the cure into the resin and reseal
- Avoid shaking the tin/container, as this will create air bubbles, instead gently rotate the for about a minute to allow the two parts to gently mix.
- If any of the Biomaster granules are still visible, these can be stirred in gently, any cloudiness will not be visible when the product dries.
- We suggest using a good quality, light coloured bristled brush (perhaps a 1-1/2 inch brush, like those used for glossing window sills) - once that you're happy to throw away after you've finished as they're very difficult to clean
- It's best to varnish in a well-lit, room temperature space, with minimal dust and debris. The space should be well ventilated, but avoid being in drafty areas, as this may blow dust, hairs etc on to the sculpture and this will stick in the varnish - as will flies and insects if you varnish outside.

- It's good practice to run a small test in a discreet area, before covering the whole sculpture, just to check there's no incompatibility issues with materials. Apply to a discreet area and then leave for 1hr.
- See the enclosed Urban Hygiene documents for further advice
- Starting at the top of the sculpture work slowly and methodically around the sculpture applying the varnish with smooth, non-dragging, strokes.
- Pay close attention and keep a check on the areas you have covered and check for varnish runs. The varnish can pool and dribble, and once this sets it's impossible to remove without sanding down
- We usually recommend 2 coats of varnish. Please apply liberally, but carefully and ensure there are no runs, pools or gaps. It's good practice to keep circling the sculpture to keep checking for these and addressing throughout the application process.
- Only decant the amount of varnish you need to use from the tin, you can keep topping up. If there is any left, please add a sticker or label to the tin with the date and time of opening and pop in the fridge. The varnish usually has a shelf life of approx. 24 hours from the point of mixing, but this can sometimes be extended to 48 hours if stored in a cold fridge.
- The sculpture should be touch dry within 6 hours, but avoid moving or lifting for 48 hours. It's good practice if working in a communal painting space to leave a note/sign by your sculpture warning that it's freshly varnished, and the date and time of completing this. Just in case anyone is spraying in the vicinity and looking to cover with a tarpaulin or dust sheet
- Do not clean with any abrasive chemicals for up to 7 days, to allow the resin to cure and reach its optimum coating protection

If you have any questions or queries please contact [annie@wildinart.co.uk](mailto:annie@wildinart.co.uk)